

Benedict Canyon

Winter 2013

Benedict Canyon Association Newsletter

Volume VI Issue 1

Communication is the Key and BCA Needs Your Help

We are blessed to live in this spectacular canyon. The wildlife, topography and flora combine to make it a unique and special place. It's sometimes hard to remember that our homes are in a major metropolitan city. Despite our bucolic surroundings, however, we face the same challenges that other Angelenos face: traffic, crime and the potential for natural disasters.

The Benedict Canyon Association is committed to making our canyon a safer place. One of the easiest and most effective ways to do this is by communicating regularly with canyon residents.

But we need *your* help.

The BCA is compiling a list of residents' email addresses and home/cell phone numbers for use only in case of an earthquake, fire, police action or other emergency or significant event.

Please complete the form below and mail it to the Benedict Canyon Association. You can also send the information by email to HandlewithClaire@aol.com.

Many of the other canyon communities and neighborhood associations have



already established "Reverse 911" systems. They have collected this information from their residents so they may alert them to an oncoming grass fire or check with them to see if they are safe after an earthquake. The BCA also envisions using email, texts or reverse 911 calls in the event of emergency. This information could also be used for something less catastrophic, for example, if Benedict Canyon Drive, or a side street, is closed due to an accident or fallen tree.

For the last few years, the BCA has also provided a list-serve, occasionally posting items of interest to subscribers. We have been careful to use the list-serve sparingly so we don't overload your inbox. If you are interested in receiving these occasional messages (generally fewer than once a month,) please indicate this on the form below. The content of these messages usually concern issues such as road construction, proposed legislation, crime reports, etc.

Of course, all of your personal information will be kept confidential and will not be sold or given away to any outside party. The information you provide will be used only for emergency notifications.

As our friends and relatives on the East Coast showed us during Hurricane Sandy, pulling together as a community in a crisis can make the experience a little less difficult. Knowing how to contact our neighbors is the first step in pulling together. Please take a moment to add your contact info to our database whether you are a member of BCA or not, being able to contact you in an emergency could save your life and your property.

(continued on page 3)

p1 Communication is the Key p2 BCA Contact List p2 President's Letter p3 Emergency Information Form
p3 LAPD Contact List p4 Are You as Safe at Home and in Your Car as You Think?
p5 Fire Station 99 Presents Awards p5 Who Do I Call? p6 Our Mini Yosemite p7 Wildlife in the LA Mountains
p8 New Acquisition of Open Space p8 New Fire Prevention Signs p9 BCA Membership Application
p10 BCA Donor Program Roster p11 Understanding Proposition HH p11 What is a Red Flag Alert?
p11 Large Planes Are Now Flying Over Benedict Canyon p12 BCA Officers p12 BCA Membership Donor Drive

(continued from page 1)

In an Emergency

• Things to take with you if you must evacuate:

- Important Household Documents
 - Irreplaceable valuables and photos
 - Some clothing
 - Medications
 - Address Book and Phone Numbers
 - Cell Phone
- Be able to load and leave in 20 minutes
- Think about what to take and where things are in your home now, ahead of any emergency
- Prepare a list of what you will take
- Give a list of emergency phone numbers and a neighbor's numbers to your children, a friend, an elderly occupant and their caregivers

If You are Not at Home in an Emergency:

Have the phone numbers of a couple of neighbors with you so you can call them to check the situation

Give one neighbor your house key in the event they must enter your home to assist children or an elderly person to evacuate.

Call nearby neighbors to check on them in an emergency situation

Keep important documents and photos of valuables in a safe deposit box

BCA Contact info:

Mail: P.O. Box #1265,
Beverly Hills, CA 90213-1265
Email: info@
benedictcanyonassociation.org
Hotline: 310.553-4BCA (4222)
Website:
BenedictCanyonAssociation.org

President's Letter

The Benedict Canyon Association (BCA) is a team of volunteers who work to preserve the beauty and quality of life in Benedict Canyon. Passionate about our hills, we have carried this tradition for 65 years and counting! The BCA relies on your loyal support. With your generous contribution, 2013 will be the best year ever for our distinguished community.



Last year proved to be a time of significant accomplishment for BCA. In cooperation with the Fire Department, we saved our beautiful curbside trees from being cut straight up from the curb and kept our unique "canopy" trees intact. Another extraordinary accomplishment for our residents was the hard fought victory to retain all of Benedict Canyon, and streets east and west of Benedict, in Council District 5 for the next ten years. Without our efforts our community would have been divided into two city council districts.

The BCA Board assures that the voice of Benedict Canyon is heard at City Hall. Most recently, the largest residential project ever to apply for permits to build in Benedict Canyon had been granted a waiver on two Fire Dept. codes. Our residents galvanized to protest these waivers and will continue to do so, with BCA at the helm.

Situations take place in our canyon that warrant your observation. Unlicensed "Community Homes," run as businesses in residential zones, have become a concern. Such "homes" in the hillsides typically have outdoor smoking pavilions in high fire hazard areas. Please inform us if you have knowledge of such establishments here in Benedict Canyon.

With updated technology using email, we can keep you current about important happenings in Benedict Canyon. If you haven't already provided us with your email address please do so and rest assured that those addresses will remain confidential.

The Benedict Canyon Association is also a member of the Bel Air/Beverly Crest Neighborhood Council, the Federation of Hillside and Canyon Associations and the WLA Police Dept. Community Advisory Board. Please join us at a BCA Board meeting the second Monday of each month, 7:00pm, at the Beverly Hills Women's Club (1700 Chevy Chase Drive, corner of Benedict Canyon). The Benedict Canyon Association invites you to be a part of our vital working team!

A handwritten signature in cursive script that reads "Nickie Miner".

Nickie Miner
President, Benedict Canyon Association

Emergency Information

Contact Information

Name	
Street Address	
Home Phone	
Cell Phone	
Work Phone	
Email Address	

Special Considerations

Please check below if appropriate:

I, or someone in my household,
is a physician

I, or someone in my household,
has limited mobility or other impairment
(vision or hearing impairment)

I, or someone in my household,
is an EMT

I, or someone in my household, has a ham radio
and knows how to use it.

I, or someone in my household,
is a nurse

I, or someone in my household, knows CPR.

Benedict Canyon List-Serve

Please add me to the BCA list-serve so I will receive occasional emails about issues in the Canyon.

Benedict Canyon Association LAPD Contact List

Emergency:	911	Crimestoppers Tip Line:	800-222-TIPS
Non-emergency Police Dispatch:	877-275-5273	LADOT/Parking Enforcement:	213-485-4184
LAPD-WLA Station Desk:	310-444-0701	All Other City Departments:	311
LADP-WLA Detective Desk:	310-444-1580	Graffiti Removal:	311
Senior Lead Officer: Chris Ragsdale:		Official Police Garage Tow:	10-478-1201
Office:	310-444-0741	Benedict Canyon Association:	
Cell:	213-305-5895	Phone:	310-553-4222
email:	26690@lapd.lacity.org	Website:	Benedictcanyonassociation.org
website:	www.lapdonline.org		

Are You as Safe at Home and in Your Car as You Think?

by Barbara Nichols

BCA monthly meeting guest speaker, Byron Wells, is an expert on home and car safety and provided some terrific tips for all of us:

FOR YOUR HOME:

- Have deadbolt locks on all exterior doors, including the door to the garage
- Arm your alarm system every time you leave your home and when you are in for the night
- Alarm upstairs windows, as burglars have a ladder or use yours
- Be sure sliding glass doors have track locks to prevent sliding or removing them
- Leave your TV on (preferably something sports) when you go out, where an intruder could hear it from outside
- Leave your dog inside
- Leave a "really big" dog food dish outside (empty) even if you do not have a dog that has a dog's name, for example "killer"
- Have a sign on the front lawn near your alarm sign that says something like this "Member National Pit Bull Association"
- Have an "attack dog" sign
- Have a "stop" sticker on each window that says all windows and doors are alarmed
- If you have a safe, be sure it is hidden and bolted into the framing or foundation
- Be alert to someone following you home, especially from a bank or party and keep driving to the nearest police station or fire department
- When returning to your home at night quickly enter your garage and drop the door behind you
- Report any suspicious activity or unfamiliar cars to the police, giving the



vehicle description, license number and description of occupants

- When away have a neighbor pick up your mail and newspapers or stop service
- Keep an eye on your neighbor's house when they are away for any cars parked out front or other suspicious activity
- Do not enter your home if you see a door has been forced open or a window broken as you may walk in on the intruder...call police immediately
- Have non-lethal protection for your home, such as a tear gas gun with an 8-15 foot stream
- SETUP A NEIGHBORHOOD WATCH. Many sections of Benedict Canyon have Neighborhood Watch groups. Call BCA and we will help you set one up for your area.

FOR YOUR CAR:

- Do not leave valuables within sight in your car
 - Park your car in your garage if you can
- ### Going to your car in a public place:
- Walk with authority
 - Have your keys in one hand and a tear gas gun or police whistle in the other
 - Check the back seat before entering
 - Always lock your car when parked and as soon as you enter

Car Broken down when alone:

- Stay in your locked car with flashers on
- Have a "Call police" sign in your REAR window so drivers going past will see it and call the police
- Keep your cell phone charged and with you
- Sit on the passenger side so someone stopping will think someone else is with you
- Do not accept help from a passerby except to call the police

Someone holds you up with a gun on the street or in a parking area:

- Give them your money and keys when asked for
- Don't ever get in the car with them
- Run, you have a very good chance of escape
- Talk calmly to the person who may be very agitated

Tear gas guns can incapacitate for 20 minutes and leave no permanent harm. You are less likely to hesitate using it than a gun. Keep a tear gas gun next to your bed and your front door. Keep your small tear gas gun in one hand when service people you do not know visit your home.

You can contact Byron Wells at 213-252-9530 at "Operation Crimefight" for more information and to have him speak at your group or organization. Byron can also provide you with a key chain tear gas gun and a larger home model, "Call Police" signs for your car, and "Stop Alarm" window stickers.

We are fortunate to live in a safe neighborhood, but crime can happen anywhere and it pays to be prepared.

Fire Station 99 Presents Awards to “Adopt Station 99 Committee” Volunteers

by Harold Tennen



Over ten years ago, Capt. Craig Evans, then Captain of Fire Station 99 on Mulholland Drive reached out to the community to ask for help. With the city always claiming it had no money, Fire Station 99, as well as most of the other stations in Los Angeles, were in need of repair. In addition, many stations including Fire Station 71 (which serves lower Benedict Canyon, South of Clear View Drive) lacked vital life saving equipment and the fire engines were old. Capt. Evans called a few members of the various homeowner associations in the area to come by and have coffee and offered a tour of the station facilities.

The visitors were stunned to see the condition of the station and what was lacking in life saving equipment. Those of us who attended this meeting decided that we needed to do something. These men and women of station 99 were the difference between life and death for us all in an emergency. They needed the best equipment and facilities for their safety and ours.

Adopt Station 99 was formed and through the committee's efforts station 99 now has one of the largest and most successful Open House events annually with over 1,000 members of the community attending. Raffles of donated items and contributions from attendees go directly toward needed projects at station 99 (which covers Benedict Canyon, North of Clear View Drive). Station 99 has been able to purchase several life saving pieces of equipment, including the jaws-of-life, which they have used to extricate trapped motorists. Additional items have improved existing engines and pressure from the committee resulted in the fire department replacing an old fire engine and retaining a paramedic vehicle. A new kitchen was installed for the firefighters as well as other improvements to make our firefighters lives more pleasant while on duty.

After ten years of effort the committee is pleased that they have helped assure station 99 has the best and most needed equipment for our firefighters and paramedics to save our lives and our homes. The committee and others who have donated their time to this project were recently presented awards by Capt. Bill Bugg in recognition of their efforts. The recipients included Joanna and Ed Brody, Diane Sherman Smith, Roberta Tennen, Valerie Bieber, Mary Ann Musico and Maria Richwine. If you would like to become involved or to donate, please call Harold Tennen, Chairman of the Adopt Fire Station 99 Committee at 310-850-4600.

Who Do I Call?

by Marcy Braiker

Have you ever had a nuisance problem or emergency that is not life threatening* and wondered what to do or who to call? If you live in Benedict Canyon, or anywhere else in Los Angeles, here is a handy number for you. It's "3-1-1". This is a free 24-hour connection to more than 1500 Los Angeles City Services. You can access any of Los Angeles' non-emergency City services just by calling 311. Representatives are available everyday between 8:00 am-4:45 pm to answer your questions, and they will automatically direct your call to the correct department.

For instance, maybe you there is a pot hole in the street that you always seem to hit, or graffiti on a wall or maybe you wonder what to do about that abandoned car which has been across the street for weeks, or have ongoing problems with the neighbor's barking dogs? Who do you call? You guessed it! When you call 311 you will be connected directly to the appropriate department for help. How easy is that? You can also receive information regarding public meeting schedules, educational, recreational and senior services, and more.

In order to provide world-class customer service, the 311 non-emergency resource is available in English & Spanish to the hearing impaired, and in more than 150 languages through the use of language translation services. How's that for service?

**Any situation that directly endangers human life or property, and demands immediate attention, is an emergency and should be reported directly to 911. Please call 911 to request emergency help from police, firefighters and paramedics*.*

Natural Paradise Near Benedict Canyon: Our mini Yosemite

by Mary Ann Musico

Conservationist Sooky Goldman and Congressman Howard Berman encouraged the DWP and the National Park Service to make Franklin Canyon Ranch (605 acres nestled in the Santa Monica Mountains adjacent to Coldwater Canyon) part of the Santa Monica Mountains National Recreation area in 1981. Many residents of Benedict Canyon joined with adjacent canyon neighborhoods in Franklin and Coldwater canyons to press for this acquisition. When the Secretary of the Interior flew over the area he looked down on a message to “please make this area a



MRCA MOUNTAINS RECREATION AND CONSERVATION AUTHORITY

national park.” How fortunate we are that this amazing open space was saved for public enjoyment. The 605 acres are primarily owned by the National Park Service but the Santa Monica Mountains Conservancy (SMMC) does own some land and buildings in the park as does the Mountain Recreation and Conservation Authority (MRCA).

Today the MRCA manages daily park operations in Franklin Canyon. This natural treasure is so near to us and in a quiet hideaway in the center of West Los Angeles. The nature Center has free field trips for Title 1 schools and can expose children who have no experience with forests and wildlife to the wonder of these things. The educational Center does a superb job of providing free educational programs to school children and the general public.

This nearby park offers extensive hiking trails with a view overlook all the way to the Pacific Ocean. There are lakeside picnic areas, open amphitheatres, lawns and towering trees. Heavenly pond is a small duck pond west of Franklin Canyon Lake. Information about the facilities, including use of outdoor facilities for reunions, company picnics, etc. can be obtained calling Maribelle Franco at 310-858-

7272. The park is open from 7am to sunset every day and the Sooky Goldman Nature Center is open from 10am-4pm including holidays, closed Mondays and Tuesdays. Photos are available at LAMOUNTAINS.com. Parking is located at the ranch area adjacent to Doheny house. Other parking is along Lake Drive and Sooky Goldman Nature Center. From the parking lot you walk up to the Center. Take Coldwater Canyon and turn left at Beverly Drive. Turn right at Franklin Canyon and drive until you reach the park gate. You will pass a great deal of open space until you arrive at Franklin Canyon and Lake Drive. Turn right to Franklin Canyon Ranch or go straight to the Sooky Goldman Nature Center and Franklin Canyon Lake.

You must keep on the trails and your dogs on a leash. There is a variety of wildlife in the area including coyotes, owls, deer, etc. Caution is recommended in any mountain hiking.

Our own mini Yosemite is just around the corner. Bring your friends and children and take advantage of this beautiful and tranquil resource. Observe stop signs, photo enforcement cameras.

This nearby park offers extensive hiking trails with a view overlook all the way to the Pacific Ocean.

Wildlife in the LA Mountains

Wildlife can be fun to watch in all seasons. Opportunities to see California ground squirrels, mule deer, raccoons, raptors and more, is easier than you might think. Look for animal signs, such as tracks, fur, bones, scat (animal droppings), nests, and holes in the ground. Remember, we are visitors in their home.

Keep your steps light and your voices low!

Do not disturb the animals or their homes



Red-Tailed Hawk



Coopers Hawk



Barn Owl



Red-Shouldered Hawk



Great Horned Owl



Spotted Skunk



Opossums



Badger



Raccoon



Mule Deer



Mountain Lion



Coyote



Bobcat



Pocket Mouse



Ground Squirrel



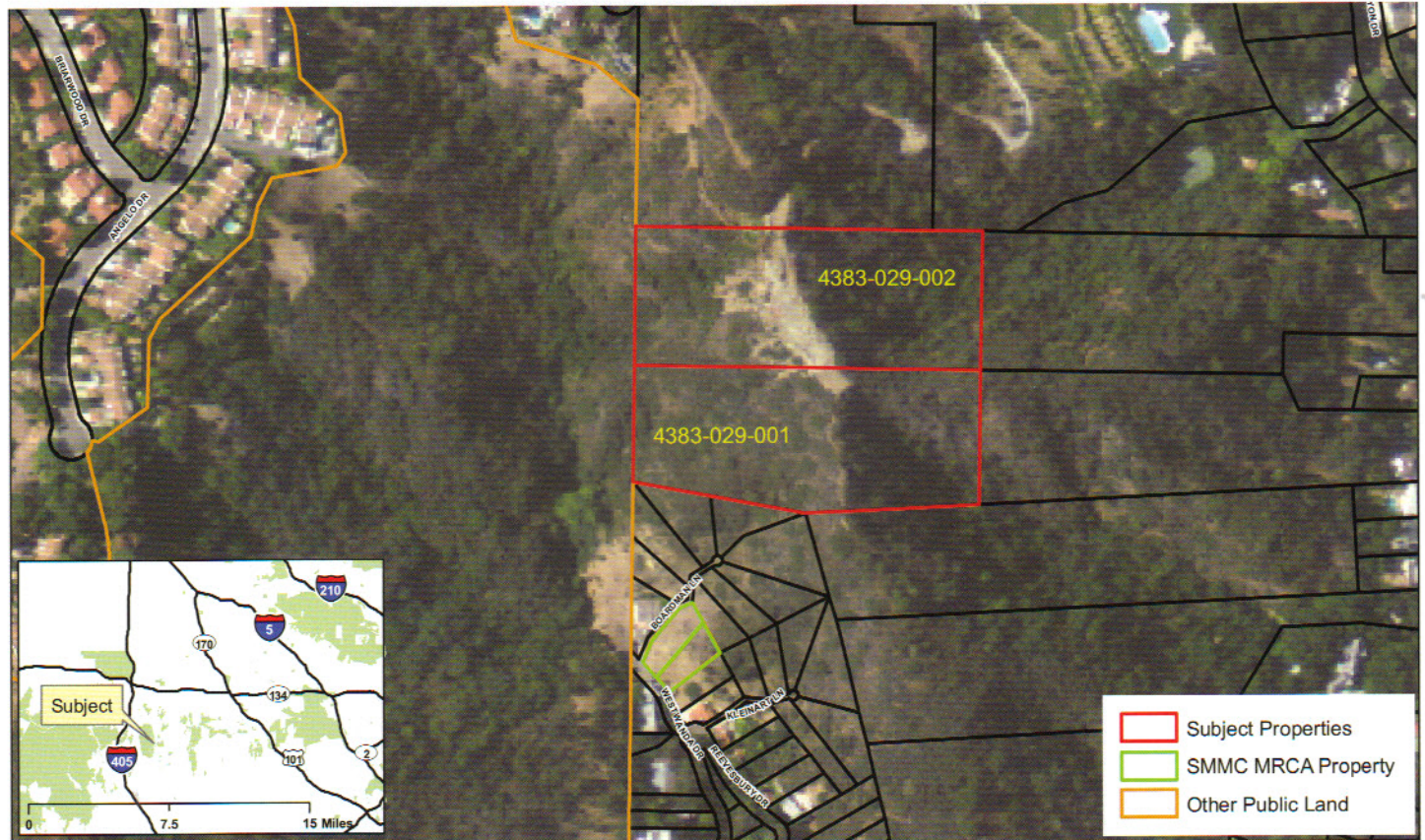
Brush Rabbit



Pocket Gopher

New Acquisition of Open Space in Benedict Canyon

by Nickie Miner



The MRCA acquisition and purchase of open space is critical to our hillsides and canyons. Thousands of wildlife live and thrive in the open spaces and natural lands in our Santa Monica Mountains. We must be vigilant to preserve open land where possible. The MRCA has recently acquired 8.91 acres in Benedict Canyon which were donated to the MRCA. These parcels are in the vicinity of Reevesbury and West Wanda. (The map depicting the parcels are APNs 4383-029-001, 4383-029-002.)

Our open spaces, parklands, and wildlife corridors have been saved and maintained by the work of the Mountains

Recreation and Conservation Authority. The MRCA is dedicated to the preservation and management of local open space and parkland, watershed lands, trails, and wildlife habitat. The MRCA manages and provides ranger services for almost 69,000 acres of public lands and parks that it owns and that are owned by the Santa Monica Mountains Conservancy. The MRCA works in cooperation with the Conservancy and other local government partners to acquire parkland, participate in vital planning processes, complete major park improvement projects, and is one of the lead agencies providing for the revitalization of the Los Angeles River.

Have You Noticed Those New Fire Prevention Signs?

by Nickie Miner

The Mountains Recreation and Conservation Authority (MRCA) is a local government public entity established in 1985 pursuant to the Joint Powers Act. The MRCA is part of a local partnership with the Santa Mountains Conservancy (SMMC), a state agency established by the Legislature.

In the aftermath of the Sepulveda Pass/Getty Center Fire, and with fuel moisture levels at record lows after our last heat wave, MRCA launched a new hillside fire safety drive

to help prevent wildfires in the hills above Los Angeles. The campaign began with young fire recruits in uniform, fire professionals and Mountains Recreation and Conservation Authority Wildland Firefighters unveiling the new signs. These new signs inform the public about fire safety and are now posted along Mulholland Drive and at Mountains Recreation and Conservation Authority parks and property throughout the Santa Monica Mountains.



Benedict Canyon

BENEDICT CANYON ASSOCIATION 2013 MEMBERSHIP APPLICATION

I want to help protect and preserve our canyon and the environment in which we live and express my support by joining the Benedict Canyon Association at the following membership level:

- \$1000+ Oak Tree
- \$500 Sycamore Tree
- \$250 Eucalyptus Tree
- \$100 Pine Tree
- \$75 Basic Membership

Name _____

Address _____

City, State, Zip _____

Daytime Phone _____ Evening Phone _____

E-Mail Address _____

Benedict Canyon Association mailing lists are strictly confidential and are never sold or shared.

I do not wish my name to appear in the BCA Newsletter, but please accept my enclosed contribution.

You can become a member of BCA through Basic Membership or as part of our "Trees of Support" Donor Program. Many members are choosing to designate their membership "In Honor of..." or "Memory of..." for someone who used to live in Benedict Canyon, a beloved family pet or anyone whom you would like to honor in this special way. Basic Membership names will not be published. Also, you may contribute at the donor level and elect not to have your name published. Benedict Canyon is protected only through your individual contributions. Thank you for supporting your community.

For membership information, please call our Hotline - (310) 553-4BCA(4222)

Benedict Canyon Association is a non-profit organization.

My payment of \$ _____ is made by:

Check payable to Benedict Canyon Association

Please charge my VISA MasterCard AMEX

Card# _____ Exp. date _____

Name as it appears on card _____

Signature _____

Please return this application along with your payment to:
Benedict Canyon Association, P.O. Box 1265, Beverly Hills, CA 90213

2013



Benedict Canyon

2012 BCA "Trees of Support" Donor Program Roster

OAK TREE

Bruce & Martha Karsh
Linell Shapiro
Diane Sherman Smith
(1) Anonymous

SYCAMORE TREE

Alex & Yuki Bouzar
Evelyn Furtak-Dorfman
Michael & Lori Eisenberg
Gary Hecker
Barbara Jaynes
Mr. & Mrs. Sam Jenkala
Greg & Susan Kay
Rodney Kemerer & Lindsay Doran
Mr. & Mrs. Greg Meidel
Hugh & Virginia O'Brian
Phil Proctor & Melinda Peterson
Art & Renee Spence

EUCALYPTUS TREE

Michael & Elaine Agran
Pejman Ben-Cohen
Barbara Berkowitz
Gary Bird
Jacqueline Bisset
Jim & Nancy Demetriades
Ken & Randee Devlin
Vera Dunn
David & Barbara Elson
Burton & Nanette Forester
Evans Frankenheimer
Paul & Renee Haas
Urban S. Hirsch, III
Gertrude Kline
Ian La Frenais
Michael Libow
Gene Lucero & Marcia Williams
Stephen Maitland-Lewis & Joni Berry
Armand Marciano
Sally Mason
Eustace Moore
Mark & Irene Montgomery
Carl R. Neu
Fred & Joan Nicholas
Rick Nicita & Paula Wagner
Leon & Mishelle Owens
Kevin & Elizabeth Parry
Jackie Patterson
Matthew & Brittney Post
Steven Rosenwasser & Kelli Sager
Albert Ruddy & Wanda McDaniel
Beverly Sassoon
Lew & Joanne Savage
William Scheetz

Robert Schwartz & Karen Breslow
Sheldon & Andrea Shapiro
Hillary Slevin
Brad Small
Mr. & Mrs. Smith
Lev L. Spiro & Melissa Rosenberg
Larry Steinman & Lucy Suzar
Don & Cynthia Wyse
(4) Anonymous

PINE TREE

Robert & Maria Abeloff
MaryBeth & Ashley Abdo
Jim Anderson & Lynn Fireside
Bijan & Sima Ansari
Steve Badeau & Jim McConville
Rajive and Anju Bagrodia
Steven Bradley Beer
George & Carolyn Bender
Robert & Irma Bereutt
Richard Best & Joanna Stingray
Ronald Boldt & Judith Shelton
Brad Boucher
Larry & Dolly Bretter
Michael J. Brewer
Naomi Brofman
Ron & Jan Cannan
Jeffrey & Judy Caren
Betty Chaplin
Mr. & Mrs. Hyman Chase
Hillel Chodos
Larry Chrysler & Matthew Michael
Eric Cleveland & Annette Stanton
Jeffrey & Rachel Cohen
Rafe Cohen
Mr. & Mrs. Alessio Coppola
Francis & Eleanor Coppola
Ted & Karen Coyne
Mark & Maggie Damon
Martha DeLaurentiis
Morris & Marlene Dennis
Joe DiStefano & Beth Rubin
Laurence & Judith Dornstein
Joseph A. & Marilyn Eisenberg
Ferdinand & Lennie Fam
David Feldman
Ruth Felmus
Sandra Fenmore
Alan Fine
Henry & Julie Fisher
Philip Forte
Jonathan Franklin
James & Donna Gallagher
Judith Gasson
Bruce & Julie Goldsmith
Marvin & Inger Gross
Carla Hacken & Lorraine Gallacher

Roger Halfhide & Patricia McVerry
Stanley H. Handman
Bill & Chris Harper
James & Jean Harris
Robert & Cynthia Hart
David & Bridget Hedison
Robert & Beth Heffron
Robert & Mary Ridings Herman
Edward & Sherry Heyman
Bruce & Lynn Heymont
David & Susan Horn
Terry Jackson
Len & Nancy Jacoby
Joel Jaffe
Julie Jaffe
Stuart & Shirley Stamen Jaffe
Elizabeth James
Ricky Jay & Chrisann Verges
Preston Johnson & Vickie Martin
Archie Kapp
Matthew Kesler
Bernard Kester
Michael J. Kopcha
Rosa Koppens
Robert & Carole Kopple
H. Kramer
Don & Hope Kurz
Marvin & Patti Lachman
Mr. & Mrs. Alan Landsburg
Mark S. Leevan
Brian LeSage
Howard & Carol Levy
Mark Liszt & Karyl Sisson
Elaine Lotwin
Mr. & Mrs. Mahdavi
In Memory of Bruce Malmuth
Robert & Mindy Mann
Barbara Marcus
Tom & Linda Markovitz
Dorothy Jean Marlowe
Mike & Ana McLachlan
In Memory of Warren Meyerhoff
Ron Michaelson & Lucinda Cowell
Helen Miller
Larry & Nickie Miner
Bob & Matlin Mirman
Mary Ann Mobley
Frank & Rio Morse
Dagmar & Alex Moscovicz
Richard & Sandra Mosk
Jimmy & Anne Murphy
Mary Ann Musico
Maud Nadler
Barbara Nichols
William & Nieva O'Toole
Alan & Donna Perris
Eddie Pinchasi
Gary & Nita Polinsky
Lawrence A. Post

Max Ramberg
Leslie Randall
Stephen & Carol Randall
Jamie & Jennifer Rhonheimer
John Rieber & Alex Duda
Andrew R. Robinson
Paul Rohrer
Gil & Val Romoff
Arlene Rosen
Saul Rosenzweig
Jim & Rachelle Rosten
Donald & Patti Ross
Sunny Russ
Joanne Sackheim
Saigal Family
John & Gayle Samore
Robert & Margaret Sanford
Susan Savage
Steven & Leslie Schenkel
Robert & Marilyn Schnair
Alan I. Schimmel
Ken Schwartz
Samuel Schwartz
Arthur & Arlene Schwimmer
Martin & Sheila Seaton
Steve & Nicole Seigel
Ron Shalowitz & David Bailey
Evelyn Shapero
Norm & Libby Shapiro
Betty Shelhamer
Perry & Linda Silver
Jay J. Silverman & Janet Wood
Bruce Simon & Betsy Hely
Mark Sklansky & Lauren Ina
Jordan Slavin & Melissa Bernstein
Brent Smith & Lisa Engel
Cortez Smith
Stanley & Susan Sokoloff
Richard & Fran Solomon
Andrew Solt & Claudia Falkenburg
Bernard & Wendy Sparer
Jeff & Annie Stein
Alana Stewart
Stephen & Rosalie Tenenbaum
Mr. & Mrs. Phillip Torf
Bernadine Towns
In Memory of Dudley Trudgett
Carol L. Vitkay
Robert J. Wagner
Brandt & Tobi Wax
Murray & Barbara Weiler
Barry & Ellie Weinstock
Jacques & Lynne Wertheimer
John Winters
Lawrence & Nancy Wolf
Judy Wolfenstein
Phillip Yaney & Jackie Keller
Gregory W. & Virginia S. Young
(18) Anonymous

Contributions received after December 31, 2012 will appear in our next publication

Understanding Proposition HH

by Nickie Miner

On November 6, 2012, voters in the eastern portion of the Santa Monica Mountains, between Griffith Park and the 405 Freeway, were asked to vote on Measure HH to provide funding to the MRCA for fire prevention, protection and maintenance of local open space and wildlife corridors, parklands, and the Mulholland Drive scenic overlooks. They provide ranger safety patrols to prevent crime and vandalism, keep pollution and trash out of local creeks and reservoirs, and sustain the trail system near Mulholland within the East Santa Monica Mountains area of the Santa Monica Mountains Conservancy Zone. Measure HH, a stable funding source for

our mountains, was approved by 76.18% of the voters.

Beginning in fiscal year 2013-2014, property owners in the East Santa Monica Mountains will be assessed \$24 per year on their regular property tax bill so that the MRCA will be able to continue their work to improve public safety, fire prevention, and open space protection services. Money raised by Measure HH will stay in the Measure HH District boundary. A Citizen's Oversight Committee will conduct annual audits to ensure the funds are spent properly and only within the subject East Santa Monica Mountains.

—Nickie Miner

So What is a Red Flag Alert?

You hear about it all the time... "The City of Los Angeles has declared a Red Flag Alert"... and it will remain in effect until further notice. Just what does this mean for those of us who live in Benedict Canyon? A "red flag alert" is called when the wind speed is 25 miles per hour or more and the relative humidity is 15% or less. History has shown that a combination of strong winds, low humidity and warm temperatures will create explosive fire potential.

For this reason, parking restrictions are placed in effect

on the narrow canyon streets in brush areas during these conditions. No cars can be parked on a red flag alert street that could block fire trucks from driving the full length of the street. To determine specific red flag restrictions and whether your street is affected by a red flag alert you can contact 311 or visit: LAFD.org/RedFlag. Improperly parked cars are subject to towing during red flag alerts.

Residents should minimize the use of candles, lighters, fire pits, barbecues and spark producing equipment during red flag alerts.

Large Planes are Now Flying Over Benedict Canyon!

by Judith Dornstein

Do you like living in the flight path to and from Burbank airport with jet planes flying over the neighborhood from 7 AM to Midnight every day, spewing noise and soot? If not, then read on!

We have more than helicopter flights coming over our canyon these days. Starting every morning at 7 AM or earlier (including weekends), and going until late at night, 20 or more huge jet planes fly over the Benedict Canyon area to and from the Burbank airport disturbing the peace, quiet and enjoyment of the Deep Canyon and Benedict Canyon residents, and leaving soot and grime on our window sills from the jet fuel emissions. This area was not in the air pattern for Burbank when most of us purchased our homes 10, 15, 20 and 30 years ago in the Deep Canyon and Benedict Canyon residential area. It is possible that this air pattern over Benedict & Deep Canyon has evolved over the years without giving any notice to the residents of the Benedict Canyon and Deep Canyon area, as the Burbank airport has expanded. This is unfair to the residents of the Benedict Canyon/Deep Canyon area, when

these planes could be and should be circling over the Burbank area as they used to do, since that is where the airport is, and those houses were purchased knowing that they were in the direct flight path and planes would be flying above them.

There is actually a Wisconsin case where homeowners sued for planes flying too low over their houses, which their Supreme Court said was a "taking" without compensation that impacted the homeowners' enjoyment of their property. If we have proof of how low these planes to and from Burbank airport fly over the Mulholland area, we might be able to cite this case as a precedent in a complaint to the FAA, since many of us bought our houses many years ago, when planes did not fly over our community.

Here's a link to a petition that everyone can sign to get this matter in front of the FAA and Congressman Waxman. The more signatures, the more they will listen to us.

<http://www.gopetition.com/petitions/stop-burbank-airport-from-flying-over-benedict-canyon.html>

Benedict Canyon

Benedict Canyon Association
P.O. Box 1265
Beverly Hills, CA 90213-1265

PRSR STD
U.S. POSTAGE
PAID
LOS ANGELES, CA
PERMIT NO. 1494

Deliver to Addressee
or to Current Resident

2013 BCA OFFICERS AND BOARD MEMBERS

EXECUTIVE COMMITTEE

Nickie Miner - President
Alan Fine - Treasurer
Brittney Post - Secretary
Michael Chasteen - Vice President
Hillary Slevin - Vice President

ADMINISTRATIVE ASSISTANT
Claire Carafello

ADVISORS
Michael Vignieri - Land Use

MEMBERS AT LARGE

Steve Berck, Barbara Blinderman,
Marcy Braiker, David Elson, Donald Loze,
Mindy Mann, Mark Montgomery,
Mary Ann Musico, Barbara Nichols,
Matthew Post

BEL AIR-BEVERLY CREST NEIGHBORHOOD COUNCIL REPRESENTATIVES

Michael Chasteen, Alan Fine,
Donald Loze, Nickie Miner

2013 BCA Membership Donor Drive

...Keep yourself and your planet in shape with this earth friendly walking enthusiast kit

Take a walk, hike, go shopping, travel...

- Includes Stainless steel water bottle
- Can be worn across body or around the waist (strap length 39")
- Zippered interior compartment for storage
- Earphone outlet for MP3 player
- Reflective piping and webbing for safety
- Made from 70% recycled PET fabric
- Holds keys, dog bags, cell phone, tear gas gun, etc.

Show your support for BCA and your community with a \$250 membership donation and receive this wonderful and useful gift from BCA.

The supply is limited so sign up today to support your neighborhood association working to preserve and protect the Benedict Canyon neighborhood!

